



OPEN ACCESS

Clinical update on pulmonary hypertension

Salim Yaghi, Anastasia Novikov, Theo Trandafirescu

Queens Hospital Center,
Medicine, Mount Sinai
Medical Center, Queens,
New York, USA

Correspondence to

Dr Theo Trandafirescu,
Queens Hospital Center,
Medicine, Mount Sinai
Medical Center, Queens,
NYC 11432, USA;
trandaf@gmail.com

Accepted 6 February 2020
Published Online First
1 April 2020

ABSTRACT

Pulmonary hypertension (PH) is a chronic, complex and challenging disease. Advances in treatment are for the subset of patients with pulmonary arterial hypertension. Selected review of the literature was conducted incorporating the European Society of Cardiology/European Respiratory Society 2015 guidelines and recommendations from the Sixth World Symposium on Pulmonary Hypertension. PH is classified into five groups based on WHO classification. Echocardiography remains the initial test of choice, and careful assessment of the right system aids in the diagnosis and prognosis of the disease. Right heart catheterization remains the gold standard of diagnosis and key guidance of treatment. Multidisciplinary approach is recommended for the care of patients with PH. Treatment selection is based on individual risk stratification of patients, and early referral to specialized PH centers improves outcomes of patients. Treating PH is complex and is best carried out in PH centers and with multidisciplinary approach. Early diagnosis and referral to those centers are key not to delay treatment.

INTRODUCTION

Pulmonary hypertension (PH) has remained a challenging chronic progressive disease since the First World Symposium meeting in 1973, which opened the era to groundbreaking discoveries about its pathophysiology and various treatment options. In this review, we try to summarize the latest evidence about the disease, its definition, classification, diagnosis and treatment, focusing mainly on group 1 pulmonary arterial hypertension (PAH).

Definitions

Pulmonary hypertension is defined as a mean pulmonary arterial pressure (mPAP) greater than 20 mm Hg at rest as per the Sixth World Symposium on Pulmonary Hypertension in 2018,¹ and greater than 25 mm Hg at rest as per the guidelines issued by the European Society of Cardiology (ESC)/European Respiratory Society (ERS) in 2015.² A subset of patients with pulmonary arterial pressure (PAP) of between 21 and 24 mm Hg are considered high-risk patients with possible poor outcomes if left unfollowed, which is why they were included in the Sixth World Symposium definition.¹

The authors based this recommendation on the fact that the original definition of mPAP of

at least 25 mm Hg was chosen somewhat arbitrarily and does not represent the upper limit of normal mPAP in the general population.^{2,3}

The prior assessment of PAP at exercise is not recommended with the current definitions due to lack of reliable data that precisely define which levels of exercise-induced changes in PAP or pulmonary vascular resistance have prognostic implications.^{2,3}

Hemodynamic definitions of PH which include more than just the PAP during right heart catheterization (RHC) are probably more useful clinically as they have prognostic and therapeutic implications and can help with further classification of the disease. The major players here are pulmonary vascular resistance and pulmonary capillary wedge pressure (table 1).¹⁻³

Classifications

The WHO classification^{1,2} categorizes multiple clinical conditions into five groups according to similarities in clinical presentation, pathological findings, hemodynamic characteristics and treatment approach. These subtypes of PH are agreed on by the ESC in 2016 and the Sixth World Symposium (box 1 and tables 2–4).

Diagnosis

ECG findings

An ECG may provide supportive evidence of PH, but a normal ECG does not exclude the diagnosis.⁴ An abnormal ECG is more likely in severe rather than mild PH. ECG abnormalities may include P pulmonale, right axis deviation, RV hypertrophy, RV strain, right bundle branch block, and QTc prolongation. Prolongation of the QRS complex and QTc suggests severe disease.⁴

Supraventricular arrhythmias may occur in advanced disease, in particular atrial flutter, but also atrial fibrillation, with a cumulative incidence of 25% in patients after 5 years.⁵ Ventricular arrhythmias are rare.

Echocardiography

Echocardiography remains the first test of choice when PH is suspected,⁶ not only because it estimates systolic PAP but also because it can assess for signs of right ventricular (RV) dysfunction as well as left ventricular (LV) dysfunction.⁷

Reading and interpreting echocardiographic imaging in respect to PH and its related effects on the right cardiac side is challenging;



© American Federation for
Medical Research 2020.
Re-use permitted under
CC BY-NC. No commercial
re-use. Published by BMJ.

To cite: Yaghi S,
Novikov A, Trandafirescu T.
J Investig Med
2020;**68**:821–827.

Table 1 Hemodynamic definitions of pulmonary hypertension types

Definition	Mean pulmonary artery pressure (mm Hg)	Pulmonary capillary wedge pressure (mm Hg)	Pulmonary vascular resistance (Wood units)
Isolated precapillary PH (formerly pulmonary arterial hypertension)	20	<15	3
Combined postcapillary and precapillary pulmonary hypertension (PH)		15	3
Isolated postcapillary PH		15	<3

therefore, the ESC guidelines issued a probability score for PH based on echocardiographic features.

The ESC/ERS and the Sixth World Symposium do not recommend using estimated systolic PAP anymore given inaccuracies of right atrial pressure (RAP) estimation and the amplification of measurement errors using derived variables; thus, continuous-wave Doppler measurement of peak tricuspid regurgitation velocity (TRV) is the main variable for assigning echocardiographic probability of PH^{1 2 8 9} (tables 5 and 6).

The algorithm in figure 1 summarizes how to use echocardiography and the probability score for PH to determine further testing and whether RHC for definitive diagnosis is indicated. It can be said that patients with symptoms plus intermediate or high echocardiographic probability score should go for RHC, and only asymptomatic patients with high probability should go for RHC; otherwise, follow-up with repeat echocardiography is reasonable (figure 1).

Cardiac MRI

Cardiac MRI (CMR) is accurate and reproducible in the assessment of RV size, morphology and function, and allows non-invasive assessment of blood flow, including stroke volume, cardiac output (CO), pulmonary arterial distensibility and RV mass.¹⁰

In patients with suspected PH, the presence of late gadolinium enhancement, reduced pulmonary arterial distensibility and retrograde flow has high predictive value in the identification of PH; however, no single CMR measurement can exclude PH.² In patients with PH, CMR may also be useful in cases with suspected congenital heart disease if echocardiography is not conclusive.

Contrast-enhanced and unenhanced magnetic resonance angiography has potential in the study of the pulmonary vasculature in patients with suspected chronic thromboembolic PH, particularly in clinical scenarios such as suspected chronic embolism in pregnant women, young patients or when iodine-based contrast media injection is contraindicated.^{2 10}

CMR provides useful prognostic information for patients with PAH both at baseline and at follow-up.^{2 10}

Severity and prognosis of disease

There is no single variable that provides sufficient diagnostic and prognostic value for patients with PH^{11 12}; therefore, a comprehensive assessment of multiple variables at regular intervals is strongly recommended by the ESC to be done in expert PH centers. This complex assessment is used to define patients' status and classify

Box 1 Updated clinical classification of pulmonary hypertension (PH)

1. Pulmonary arterial hypertension (PAH).

- ▶ Idiopathic.
- ▶ Heritable.
- ▶ Drug-induced and toxin-induced (see table 2).
- ▶ Associated with the following:
 - Connective tissue disease.
 - Portal hypertension.
 - Congenital heart disease.
 - Schistosomiasis.
- ▶ PAH long-term responders to calcium channel blockers (see table 3).
- ▶ PAH with overt features of pulmonary veno-occlusive disease/or pulmonary capillary hemangiomatosis (see table 4).
- ▶ Persistent PH of the newborn syndrome.

2. Pulmonary hypertension due to left heart disease.

- ▶ PH due to heart failure with preserved left ventricular ejection fraction.
- ▶ PH due to heart failure with reduced left ventricular ejection fraction.
- ▶ Valvular heart disease.
- ▶ Congenital/acquired cardiovascular conditions leading to postcapillary PH.

3. Pulmonary hypertension due to lung disease and/or hypoxia.

- ▶ Obstructive pulmonary diseases.
- ▶ Restrictive pulmonary diseases.
- ▶ Other lung disease with mixed restrictive/obstructive pattern.
- ▶ Hypoxia without lung disease.
- ▶ Developmental lung disorders.

4. Pulmonary hypertension due to pulmonary artery obstruction.

- ▶ Chronic thromboembolic PH.
- ▶ Other pulmonary artery obstructions.
 - Sarcoma (high or intermediate grade) or angiosarcoma.
 - Other malignant tumors (renal, uterine, germ cell tumor of the testis, other tumors).
 - Non-malignant tumors (uterine leiomyoma).
 - Arteritis without connective tissue disease.
 - Congenital pulmonary arteries stenoses.
 - Parasites (hydatidosis).

5. Pulmonary hypertension with unclear and/or multifactorial mechanisms.

- ▶ Hematological disorders: chronic hemolytic anemia and myeloproliferative disorders.
- ▶ Systemic and metabolic disorders: pulmonary Langerhans cell histiocytosis, Gaucher disease, glycogen storage disease, neurofibromatosis and sarcoidosis.
- ▶ Others: fibrosing mediastinitis, chronic renal failure (with/without dialysis), pulmonary tumorous thrombotic microangiopathy and HIV.

them into low, intermediate or high risk.² Most of the proposed variables and cut-off values are based on expert opinion.

Table 2 Classification of drugs and toxins associated with pulmonary arterial hypertension

Definite	Possible
Aminorex	Cocaine
Fenfluramine	Phenylpropanolamine
Dexfenfluramine	L-tryptophan
Benfluorex	St John's wort
Methamphetamines	Amphetamines
Dasatinib	Interferon alpha and beta
Toxic rapeseed oil	Alkylating agents
	Bosutinib
	Direct-acting antiviral agents against hepatitis C virus
	Leflunomide
	Indirubin (Chinese herb Qing-Dai)

Table 3 Definitions of acute and long-term response

Acute pulmonary vasoreactivity for patients with idiopathic, heritable or drug-induced PAH.	Reduction of mPAP >10 mm Hg to reach an absolute value of mPAP <40 mm Hg.
	Increased or unchanged cardiac output.
Long-term response to CCBs.	New York Heart Association functional class I/II. With sustained hemodynamic improvement (same or better than achieved in the acute test) after at least 1 year on CCBs only.

CCBs, calcium channel blockers; mPAP, mean pulmonary arterial pressure; PAH, pulmonary arterial hypertension.

Table 4 Signs suggestive of venous and capillary (pulmonary veno-occlusive disease/pulmonary capillary hemangiomatosis) involvement

Pulmonary function tests	Decreased DLCO (<50%). Severe hypoxemia.
High-resolution chest CT	Septal lines, centrilobular ground glass opacities, and mediastinal lymphadenopathy.
Response to PAH therapy	Possible pulmonary edema.
Genetic background	Biallelic EIF2AK4 mutations.
Occupational exposure	Organic solvent (trichloroethylene).

DLCO, diffusing capacity of the lungs for carbon monoxide; PAH, pulmonary arterial hypertension.

Table 5 Echocardiographic probability of pulmonary hypertension (PH) in symptomatic patients with suspicion of pulmonary hypertension

Peak tricuspid regurgitation velocity (m/s)	Presence of other echocardiographic signs of PH	Echocardiographic probability of pulmonary hypertension
<2.8 or not measurable	No	Low
<2.8 or not measurable	Yes	Intermediate
2.9–3.4	No	
2.9–3.4	Yes	High
>3.4	Not required	

Table 6 Echocardiographic signs of PH

A. Ventricles	B. Pulmonary artery	C. Inferior vena cava and right atrium
Right ventricle/left ventricle basal diameter ratio >1.0.	Right ventricular outflow Doppler acceleration time <105 ms and/or mid-systolic notching.	Inferior vena cava diameter >21 mm with decreased inspiratory collapse (<50% with inspiration).
Flattening of interventricular septum (left ventricular eccentricity index >1.1 in systole and/or diastole).	Early diastolic pulmonary regurgitation velocity >2.2 m/s.	Right atrial area (end-systole) >18 cm ² .
	Pulmonary artery diameter >25 mm.	

At least two from different categories (A, B or C) should be present to alter the probability of echocardiographic PH score.
PH, pulmonary hypertension.

Mortality numbers are crude rates that were studied in patients with idiopathic PAH (IPAH) only; therefore, individualization of assessment is needed. The individual risk is modified by other factors, such as the rate of disease progression and the presence or absence of signs of right heart failure, or syncope, and also by the presence of comorbidities, age, sex, background therapy, and PAH subtype, among others (table 7).

An important note to take from these variables is that functional class and exercise capacity are vital in the assessment process. The WHO Functional Class (WHO-FC) remains one of the most powerful predictors of survival, and 6 min walking test remains the most widely used exercise test in PH centers (table 8).^{12 11-13}

We can note as well that RV function is a key determinant of exercise capacity, and in contrast to common belief the estimated systolic PAP at rest is usually not prognostic and not relevant for therapeutic decision making.^{2 14} It is reasonable to say that the effects of this high pressure, especially on the right cardiac system, determine exercise capacity and predict survival.

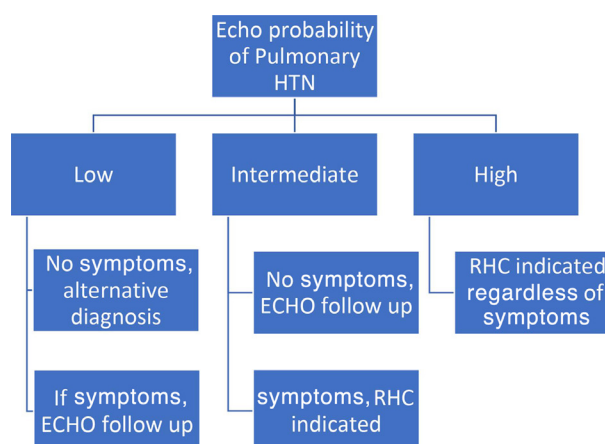
**Figure 1** ECHO probability score diagnostic algorithm

Table 7 Risk stratification of PH patients

1-year mortality prognosis factors	Low risk (<5%)	Intermediate risk (5%–10%)	High risk (>10%)
Clinical right heart failure	Absent	Absent	Present
Symptom progression	No	Slow	Rapid
Syncope	No	Occasional syncope with heavy exercise or orthostatic change	Repeated syncope, especially at rest
WHO Functional Class	I and III	III	IV
6MWD (m)	440	165–440	<165
Cardiopulmonary exercise testing	Peak VO ₂ >15 mL/min/kg (>65% pred) VE/VCO ₂ slope <36	Peak VO ₂ 11–15 mL/min/kg (35%–65% pred) VE/VCO ₂ slope 36–44.9	Peak VO ₂ <11 mL/min/kg (<35% pred) VE/VCO ₂ slope >45
NT-proBNP (ng/L)	<300	300–1400	1400
Imaging (echocardiography and/or cardiac MRI)	RA area <18 cm ² No pericardial effusion	RA area 18–26 cm ² Minimal pericardial effusion	RA area >26 cm ² Pericardial effusion
Hemodynamics	RAP <8 mm Hg CI >2.5 L/min/m ² SvO ₂ >65%	RAP 8–14 mm Hg CI 2.0–2.4 L/min/m ² SvO ₂ 60%–65%	RAP >14 mm Hg CI <2.0 L/min/m ² SvO ₂ <60%

Treatment and management of PH

Historical background

Despite PH being recognized as early as 1891 by German physician Ernst von Romberg,¹⁵ it took nearly 100 years for the first disease-specific medication intravenous epoprostenol to be approved in 1995.¹⁵ PH remains an orphan disease that has received little clinical attention possibly due to lack of solid scientific understanding, and even after the introduction of right heart catheterization by Werner Forssmann in 1929 and direct measurement of PAP no drugs have been available for chronic treatment. It was not until the appetite-suppressant, aminorex-induced PAH epidemic in 1973 when WHO held its first meeting in Geneva to assess what is known and not known about PH and PAH.¹⁵ After this, significant interest from the scientific community rapidly ensued, with advances in the understanding of the mechanisms involved in the pathophysiology and biology of PAH and IPAH and with clinical trials being conducted in the 1980s and early 1990s.

In 1982, the first treatment for primary PH was published in the form of heart-lung transplantation by Norm Shumway and colleagues.¹⁷ The first medical therapy was not realized until the Nobel Prize winning work on prostacyclin by Vane, Bergstrom and Samuelson. Even after demonstrating the beneficial effects of intravenous prostacyclin in 1982, 13 years have passed before epoprostenol was finally approved by the Food and Drug Administration (FDA) in 1995 for the treatment of IPAH (formerly known as primary pulmonary hypertension).

Bosentan, an endothelin ETA/ETB receptor antagonist, was the first oral therapy approved for the treatment of PAH.

Table 8 WHO functional classes

WHO Functional Class	Description
Class I	Can perform ordinary physical activity without symptoms.
Class II	Ordinary activity causes symptoms of dyspnea, fatigue, chest pain or near syncope. Comfortable at rest.
Class III	Marked limitation of activity. Less than ordinary activity causes symptoms. Comfortable at rest.
Class IV	Cannot perform any activity without symptoms. Dyspnea and/or fatigue at rest.

Evolution of PAH therapy

- ▶ Epoprostenol intravenously (Flolan): approved in 1995.
- ▶ Bosentan orally: approved in 2001.
- ▶ Treprostinil subcutaneously: approved in 2002.
- ▶ Iloprost inhaled: approved in 2004.
- ▶ Treprostinil intravenously: approved in 2005.
- ▶ Sildenafil orally: approved in 2005.
- ▶ Ambrisentan orally: approved in 2007.
- ▶ Tadalafil orally: approved in 2009.
- ▶ Treprostinil inhaled: approved in 2009.
- ▶ Epoprostenol intravenously (Veletri): approved in 2010.
- ▶ Riociguat orally: approved in 2013.
- ▶ Macitentan orally: approved in 2013.
- ▶ Treprostinil orally: approved in 2013.
- ▶ Selexipag orally: approved in 2015.

With advances in biological, molecular and genetic medicine, we now have 14 FDA drugs for PAH.

Treatment of WHO group 1 PAH by targeting the nitric oxide, endothelin and prostaglandin pathways has been standard since the 2003 World Symposium on Pulmonary Hypertension (WSPH) guidelines. In the following lines and algorithms, we try to summarize the treatments proposed by the the Sixth WSPH task force and the ESC 2018 guidelines.

General measures and supportive therapy should be initiated to all patients with confirmed diagnosis of PAH.

General measures

- ▶ Avoid pregnancy.
- ▶ Influenza and pneumococcal vaccines.
- ▶ Psychosocial support.
- ▶ Supervised exercise training and avoid excessive physical activity that leads to distressing symptoms.
- ▶ Inflight oxygen (O₂) therapy for partial pressure of oxygen (PO₂) less than 60 mm Hg or class III–IV.
- ▶ Avoid general anesthesia and use epidural instead, if feasible.

Supportive therapy

Diuretics for RV failure and fluid overload.

Long-term O₂ if PO₂ is consistently less than 60 mm Hg.

Consider oral anticoagulant for IPAH and heritable PAH (no strong evidence to support low therapeutic range warfarin therapy that targets international normalized ratio (INR) 1.5–2.5).¹⁸ ¹⁹

Correct anemia and/or iron deficiency.

Use of ACE, angiotensin receptor blockers (ARBs), beta blockers (BB) and ivabradine is not recommended in PAH unless there is a compelling indication.

All patients with a diagnosis of group 1 PAH according to WHO should be referred to a PH center to guide treatment and ongoing management.

Intravenous epoprostenol received the strongest recommendation for therapy in high-risk patients due to its proven mortality benefit in patients with PAH even as a monotherapy.²⁰

Vasoreactivity testing is indicated in patients with IPAH, heritable pulmonary arterial hypertension (HPAH) and

PAH due to toxins or drugs. Vasoactive patients should be treated with high doses of CCB (diltiazem, nifedipine or amlodipine) and reassessed in 3–4 months. If no adequate response, then patients can be treated like non-vasoactive patients.

Calcium channel blockers (CCBs). It has been increasingly recognized that only a small number of patients with IPAH who demonstrate favorable response to acute vasodilator testing at the time of RHC do well with CCBs.^{1 2 21} The CCBs that have been predominantly used in reported studies are nifedipine, diltiazem and amlodipine, with particular emphasis on nifedipine and diltiazem. The choice of CCB is based on the patient's heart rate at baseline, with a relative bradycardia favoring nifedipine and amlodipine and a relative tachycardia favoring diltiazem. The daily doses of these drugs that have shown efficacy in IPAH are relatively high: 120–240 mg for nifedipine, 240–720 mg for diltiazem and up to 20 mg for amlodipine. Factors that limit dose increase are usually systemic hypotension and lower limb peripheral edema. Patients with IPAH who meet the criteria for a positive vasodilator response and are treated with CCBs should be followed closely both for safety and efficacy, with a complete reassessment after 3–4 months of therapy including RHC. If the patient does not show an adequate response, defined as being in WHO-FC I or II and with a marked hemodynamic improvement (near normalization), additional PAH therapy should be instituted. In some cases the combination of CCB with the approved PAH drugs is required due to further clinical deterioration in case of CCB withdrawal attempts.

Vasodilator responsiveness does not appear to predict a favorable long-term response to CCB therapy in patients with PAH in the setting of connective tissue disease (CTD), HIV, portopulmonary hypertension and pulmonary veno-occlusive disease.

Patients who have not undergone a vasoreactivity study or those with a negative study and at low or intermediate risk should not be started on CCBs due to potential severe side effects (eg, hypotension, syncope and RV failure), and can be treated with either disease-specific monotherapy or oral combination therapy.

No data for any specific monotherapy over the other, so choice is individualized.

Monotherapy from any class based on suitability has been relegated a 'residual role' in the following patients¹:

1. Vasoreactive patients with PH who maintain reactivity and functional class I/II with sustained hemodynamic improvement after at least 1 year on CCBs only.
2. Patients with a low-risk profile who have historically been stable on monotherapy.
3. Patients with IPAH more than 75 years old with multiple risk factors for left heart disease.
4. Patients with PAH with suspicion or high probability of pulmonary veno-occlusive disease or pulmonary capillary hemangiomatosis.
5. Patients with PAH associated with HIV, portopulmonary hypertension, or uncorrected congenital heart disease, as they were not included in randomized controlled trials of upfront combination therapy.
6. Patients with very mild disease defined on the basis of WHO-FC I, pulmonary vascular resistance of 3–4 Wood units (WU), mPAP of less than 30 mm Hg, and normal right ventricle on echocardiography.

7. Combination therapy unavailable or contraindicated.

In non-vasoactive and high-risk patients, combination therapy including intravenous prostacyclin analog, especially intravenous epoprostenol (decreases 3-month mortality in high-risk patients), is recommended.²⁰

In case of inadequate clinical response to initial combination or monotherapy, sequential double or triple combination therapy is recommended (riociguat and phosphodiesterase type 5 inhibitor (PDE-5i) are contraindicated).

In case of inadequate clinical response with sequential double combination therapy, triple combination should be attempted.

Refer to lung transplant if there is inadequate response to combination therapy. Balloon atrial septostomy (decompresses the right heart chambers by creating interatrial right to left shunt; this will improve LV preload and CO, and also improve systemic O₂ transport despite arterial O₂ desaturation) should be considered as palliative or bridging procedure in patients who are deteriorating despite maximal medical therapy.

The following dual combination therapies are recommended on the basis of evidence:

1. Macitentan and sildenafil.
2. Riociguat and bosentan.
3. Selexipag and endothelin receptor antagonist or PDE-5i, or both.

Endothelin receptor antagonists (ERA). Activation of the endothelin system has been demonstrated in both plasma and lung tissue of patients with PAH. Endothelin-1 exerts vasoconstrictor and mitogenic effects by binding to two distinct receptor isoforms in the pulmonary vascular smooth muscle cells, endothelin receptors types A and B.

Ambrisentan. Ambrisentan is an ERA that preferentially binds with endothelin receptor type A. The incidence of abnormal liver function tests ranges from 0.8% to 3%. Monthly liver function assessment is not mandated in the USA. An increased incidence of peripheral edema has been reported with ambrisentan use.

Bosentan. Bosentan is an oral active dual endothelin receptor type A and B antagonist and the first molecule of its class to be synthesized. Increases in hepatic aminotransferases occurred in approximately 10% of patients and were found to be dose-dependent and reversible after dose reduction or discontinuation. For these reasons, liver function testing should be performed monthly in patients receiving bosentan.

Macitentan. Dual ERA macitentan has shown benefits to both patients who had not received treatment previously and those receiving additional therapy for PAH. While no liver toxicity was shown, reduction in blood hemoglobin ≤ 8 g/dL was observed in 4.3% of patients receiving 10 mg of macitentan.

PDE-5i and guanylate cyclase stimulators

Inhibition of the cyclic guanosine monophosphate (cGMP) degrading the phosphodiesterase type 5 enzyme results in vasodilation through the nitric oxide (NO)/cGMP pathway at sites expressing this enzyme. Since the pulmonary vasculature contains substantial amounts of phosphodiesterase type 5, the potential clinical benefit of PDE-5is has been

investigated in PAH. In addition, PDE-5is exert antiproliferative effects. All three PDE-5is approved for the treatment of erectile dysfunction—sildenafil, tadalafil and vardenafil—cause significant pulmonary vasodilation, with maximum effects observed after 60, 75–90 and 40–45 min, respectively.

Sildenafil

Sildenafil is an orally active, potent and selective inhibitor of phosphodiesterase type 5. Most side effects of sildenafil are mild to moderate and mainly related to vasodilation (headache, flushing, epistaxis).

Based on pharmacokinetic data, an intravenous formulation of sildenafil has been proposed as a bridge for patients with PAH on long-term oral treatment who are temporarily unable to ingest tablets.

Tadalafil

Tadalafil is a once-daily dispensed selective PDE-5i. The side effect profile is similar to that of sildenafil.

Vardenafil

Vardenafil is a twice-daily dispensed PDE-5i. The side effect profile is similar to that of sildenafil.

Riociguat

While PDE-5is such as sildenafil, tadalafil and vardenafil enhance the NO/cGMP pathway, slowing cGMP degradation, soluble guanylate cyclase (sGC) stimulators enhance cGMP production. Moreover, preclinical studies show sGC stimulators have antiproliferative and antiremodeling properties in various animal models. The most common serious adverse event was syncope. The

combination of riociguat and PDE-5i is contraindicated due to hypotension.

Prostacyclin analogs and prostacyclin receptor agonists

Prostacyclin is produced predominantly by endothelial cells and induces potent vasodilation of all vascular beds. This compound is the most potent endogenous inhibitor of platelet aggregation and also appears to have both cytoprotective and antiproliferative activities. Dysregulation of the prostacyclin metabolic pathways has been shown in patients with PAH as assessed by a reduction of prostacyclin synthase expression in the pulmonary arteries and of prostacyclin urinary metabolites. The clinical use of prostacyclin in patients with PAH has been extended by the synthesis of stable analogs that possess different pharmacokinetic properties but share qualitatively similar pharmacodynamic effects.

Epoprostenol

Epoprostenol (synthetic prostacyclin) has a short half-life (3–5 min) and is stable at room temperature for only 8 hours; it requires cooling and continuous administration by means of an infusion pump and a permanent tunneled catheter. Epoprostenol improves symptoms, exercise capacity and hemodynamics and is the only treatment shown to reduce mortality. Treatment with epoprostenol is initiated at a dose of 2–4 ng/kg/min, with doses increasing at a rate limited by side effects (flushing, headache, diarrhea, leg pain). The optimal dose varies between individual patients, ranging in the majority between 20 and 40 ng/kg/min. Serious adverse events related to the delivery system include pump malfunction, local site infection, catheter obstruction and sepsis. Guidelines for the prevention of central venous catheter

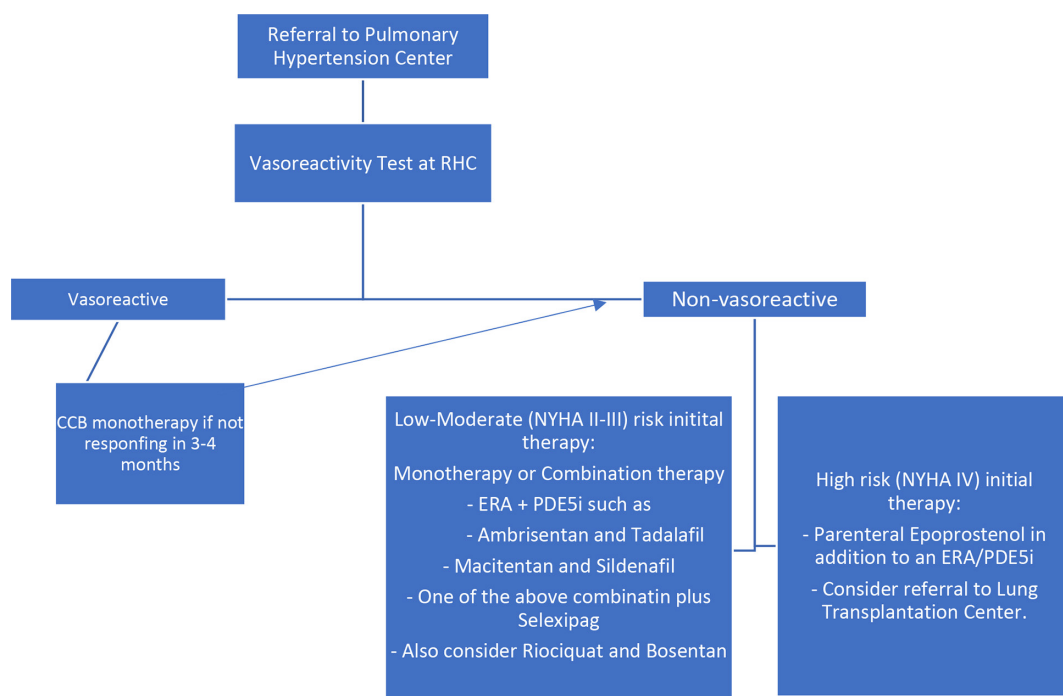


Figure 2 RHC, right heart catheterization; CCB, calcium channel blockers; NYHA, New York Heart Association; ERA, endothelin receptor antagonists; PDE5, phosphodiesterase type 5 inhibitor.

bloodstream infections have been proposed. Abrupt interruption of the epoprostenol infusion should be avoided because in some patients this may lead to a PH rebound with symptomatic deterioration and even death.

Iloprost

Iloprost is a chemically stable prostacyclin analog available for intravenous, oral or aerosol administration. The effects of oral iloprost have not been assessed in PAH.

Treprostinil

Treprostinil is a tricyclic benzidine analog of epoprostenol, with sufficient chemical stability to be administered at ambient temperature. These characteristics allow administration of the compound by intravenous and subcutaneous routes. The subcutaneous administration of treprostinil can be accomplished by a microinfusion pump and a small subcutaneous catheter. Infusion site pain is the most common adverse effect of treprostinil, leading to discontinuation of treatment in 8% of cases on active drug and limiting dose increases in an additional proportion of patients. Treatment with subcutaneous treprostinil is initiated at a dose of 1–2 ng/kg/min, with doses increasing at a rate limited by side effects (local site pain, flushing, headache). The optimal dose varies between individual patients, ranging in the majority between 20 and 80 ng/kg/min (figure 2).

CONCLUSION

This overview emphasizes the complexity of PH and PAH or group 1 PH. We encourage early referral to tertiary care PH centers to coordinate management between cardiologists, pulmonologist and internists. Despite advances in therapies for PAH, individualization of care is essential to choosing between various options. Sequential dual or tertiary therapy for patients with PAH who fail monotherapy is recommended by the ESC/ERS. We suggest that upfront dual or even tertiary therapy in selected patients with moderate-risk to high-risk features might be helpful in improving prognosis in these subsets of patients. Subsequent studies addressing this question will be needed.

Funding The authors have not declared a specific grant for this research from any funding agency in the public, commercial or not-for-profit sectors.

Competing interests None declared.

Patient consent for publication Not required.

Provenance and peer review Commissioned; externally peer reviewed.

Author note Pulmonary arterial hypertension (PAH) carries a poor prognosis if not promptly diagnosed and appropriately treated. The development and approval of 14 medications over the last several decades have led to a rapidly evolving approach to therapy, and have necessitated periodic updating of evidence-based treatment guidelines.

Open access This is an open access article distributed in accordance with the Creative Commons Attribution Non Commercial (CC BY-NC 4.0) license, which permits others to distribute, remix, adapt, build upon this work non-commercially, and license their derivative works on different terms, provided the original work is properly cited, an indication of whether changes were

made, and the use is non-commercial. See: <http://creativecommons.org/licenses/by-nc/4.0/>.

ORCID iD

Theo Trandafirescu <http://orcid.org/0000-0002-5953-9516>

REFERENCES

- 1 Simonneau G, Montani D, Celermajer DS, *et al*. Haemodynamic definitions and updated clinical classification of pulmonary hypertension. *Eur Respir J* 2019;53:1801913.
- 2 Galiè N, Humbert M, Vachiery J-L, *et al*. 2015 ESC/ERS guidelines for the diagnosis and treatment of pulmonary hypertension: the joint Task force for the diagnosis and treatment of pulmonary hypertension of the European Society of cardiology (ESC) and the European respiratory Society (ERS): endorsed by: association for European paediatric and congenital cardiology (AEPC), International Society for heart and lung transplantation (ISHLT). *Eur Respir J* 2015;46:903–75.
- 3 Kovacs G, Berghold A, Scheidl S, *et al*. Pulmonary arterial pressure during rest and exercise in healthy subjects: a systematic review. *Eur Respir J* 2009;34:888–94.
- 4 Bossone E, Paciocco G, Iarussi D, *et al*. The prognostic role of the ECG in primary pulmonary hypertension. *Chest* 2002;121:513–8.
- 5 Olsson KM, Nickel NP, Tongers J, *et al*. Atrial flutter and fibrillation in patients with pulmonary hypertension. *Int J Cardiol* 2013;167:2300–5.
- 6 Frost A, Badesch D, Gibbs JSR, *et al*. Diagnosis of pulmonary hypertension. *Eur Respir J* 2019;53:1801904.
- 7 Jacobs W, Konings TC, Heymans MW, *et al*. Noninvasive identification of left-sided heart failure in a population suspected of pulmonary arterial hypertension. *Eur Respir J* 2015;46:422–30.
- 8 Fisher MR, Forfia PR, Chamera E, *et al*. Accuracy of Doppler echocardiography in the hemodynamic assessment of pulmonary hypertension. *Am J Respir Crit Care Med* 2009;179:615–21.
- 9 Rich JD, Shah SJ, Swamy RS, *et al*. Inaccuracy of Doppler echocardiographic estimates of pulmonary artery pressures in patients with pulmonary hypertension: implications for clinical practice. *Chest* 2011;139:988–93.
- 10 Lewis R, Coglianò M, Johns CS, *et al*. Cardiac MRI: identifying thresholds to predict mortality in pulmonary arterial hypertension. B27. Heartbreaker: heart failure and pulmonary hypertension. *Am Thorac Soc* 2019;99:A2809.
- 11 Benza RL, Miller DP, Foreman AJ, *et al*. Prognostic implications of serial risk score assessments in patients with pulmonary arterial hypertension: a Registry to evaluate early and long-term pulmonary arterial hypertension disease management (reveal) analysis. *J Heart Lung Transplant* 2015;34:356–61.
- 12 Benza RL, Miller DP, Barst RJ, *et al*. An evaluation of long-term survival from time of diagnosis in pulmonary arterial hypertension from the reveal registry. *Chest* 2012;142:448–56.
- 13 Hoeper MM, Ghofrani H, Grunig E, *et al*. Pulmonary hypertension. *Deutsches Ärzteblatt International* 2017;114.5:73.
- 14 Raymond RJ, Hinderliter AL, Willis PW, *et al*. Echocardiographic predictors of adverse outcomes in primary pulmonary hypertension. *J Am Coll Cardiol* 2002;39:1214–9.
- 15 Barst RJ. Pulmonary hypertension: past, present and future. *Ann Thorac Med* 2008;3:1–4.
- 16 Humbert M. Pulmonary arterial hypertension and chronic thromboembolic pulmonary hypertension: pathophysiology. *Eur Respir Rev* 2010;19:59–63.
- 17 Norman Shumway. *BMJ* 2006;332:553.
- 18 Preston IR, Roberts KE, Miller DP, *et al*. Effect of warfarin treatment on survival of patients with pulmonary arterial hypertension (PAH) in the registry to evaluate early and long-term PAH disease management (reveal). *Circulation* 2015;132:2403–11.
- 19 Olsson KM, Delcroix M, Ghofrani HA, *et al*. Anticoagulation and survival in pulmonary arterial hypertension: results from the comparative, prospective registry of newly initiated therapies for pulmonary hypertension (COMPERRA). *Circulation* 2014;129:57–65.
- 20 Barst RJ, Rubin LJ, Long WA, *et al*. A comparison of continuous intravenous epoprostenol (prostacyclin) with conventional therapy for primary pulmonary hypertension. *N Engl J Med* 1996;334:296–301.
- 21 Sitbon O, Humbert M, Jaïs X, *et al*. Long-term response to calcium channel blockers in idiopathic pulmonary arterial hypertension. *Circulation* 2005;111:3105–11.