

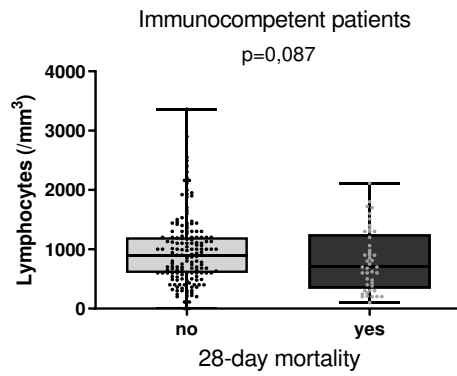
**Is blood lymphocyte count a prognostic biomarker in *Staphylococcus aureus* bacteraemia?**

Mathieu Blot. MD. PhD. Abdeljalil Zeggay. MD. Ludwig-Serge Aho-Glele. MD. Caroline Laborde. MD. Vincent Le Moing MD. PhD. Catherine Chirouze MD. PhD. Kevin Bouiller MD. PhD. Lionel Piroth MD. PhD.

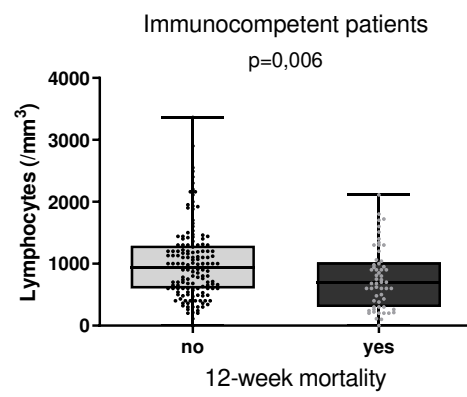
**Supplementary data**

## Supplementary Figure 1

A



B



Suppl. Figure 1: Lymphocyte count according to 28-day mortality (C) and 12-week mortality (D) in immunocompetent patients.

**Supplementary Table 1. Multivariable analysis of factors associated with 12-week mortality in *Staphylococcus aureus* bacteremia.**

	OR	95% CI		P-value
Age (per increase of 1 year)	1.0615	1.0401	1.0833	0.000
Chronic lung disease (yes/no)	1.7497	0.9910	3.0892	0.054
Chronic heart failure (yes/no)	1.7836	1.0321	3.0822	0.038
Chronic renal insufficiency (yes/no)	1.5427	0.9228	2.5789	0.098
Diabetes mellitus (yes/no)	1.0298	0.6727	1.5763	0.893
Immunodepression (yes/no)	0.7330	0.4338	1.2385	0.246
Center (Besançon/Dijon)	0.5481	0.3216	0.9340	0.027
Temperature $\leq 38^{\circ}\text{C}$ (yes/no)	2.0276	1.1181	3.6770	0.020
Severe sepsis (yes/no)	5.1496	3.1191	8.5018	0.000
Acute cardiac insufficiency (yes/no)	2.9477	1.1615	7.4803	0.023
Pneumonia (yes/no)	3.6276	1.4349	9.1709	0.006
Central nervous system origin (yes/no)	1.8275	0.7034	4.7478	0.216
Neutrophils count (D0-1)*	1.00001	0.99997	1.00005	0.578
Lymphocytes count (D0-1)*	0.9997	0.9992	1.0003	0.393
Monocytes count (D0-1)*	1.0001	0.9995	1.0007	0.739
Eosinophils count (D0-1)*	1.0000	0.9982	1.0019	0.973
Methicillin susceptibility of <i>S. aureus</i> (yes/no)	0.7516	0.4372	1.2922	0.302

\* Multiple imputation was used for missing data in lymphocytes, neutrophils, monocytes and eosinophils count.

(n=241 patients with missing data, n=561 patients were considered in the analysis after imputation)