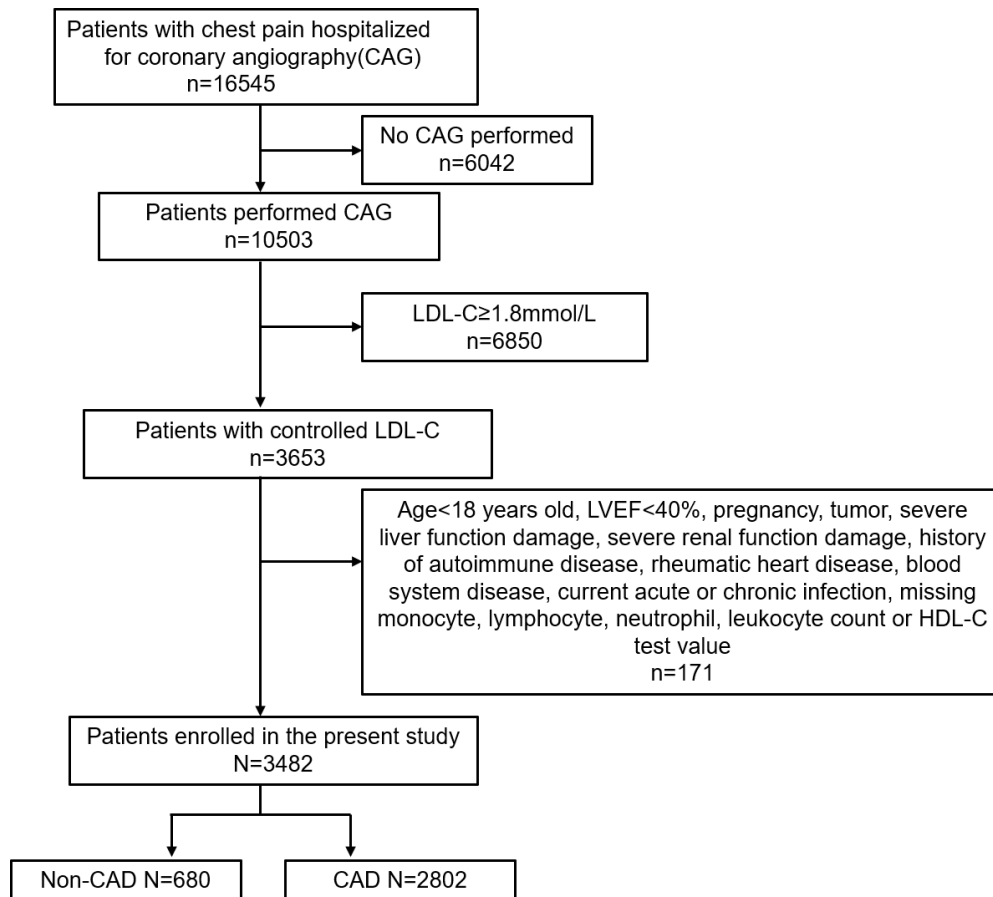
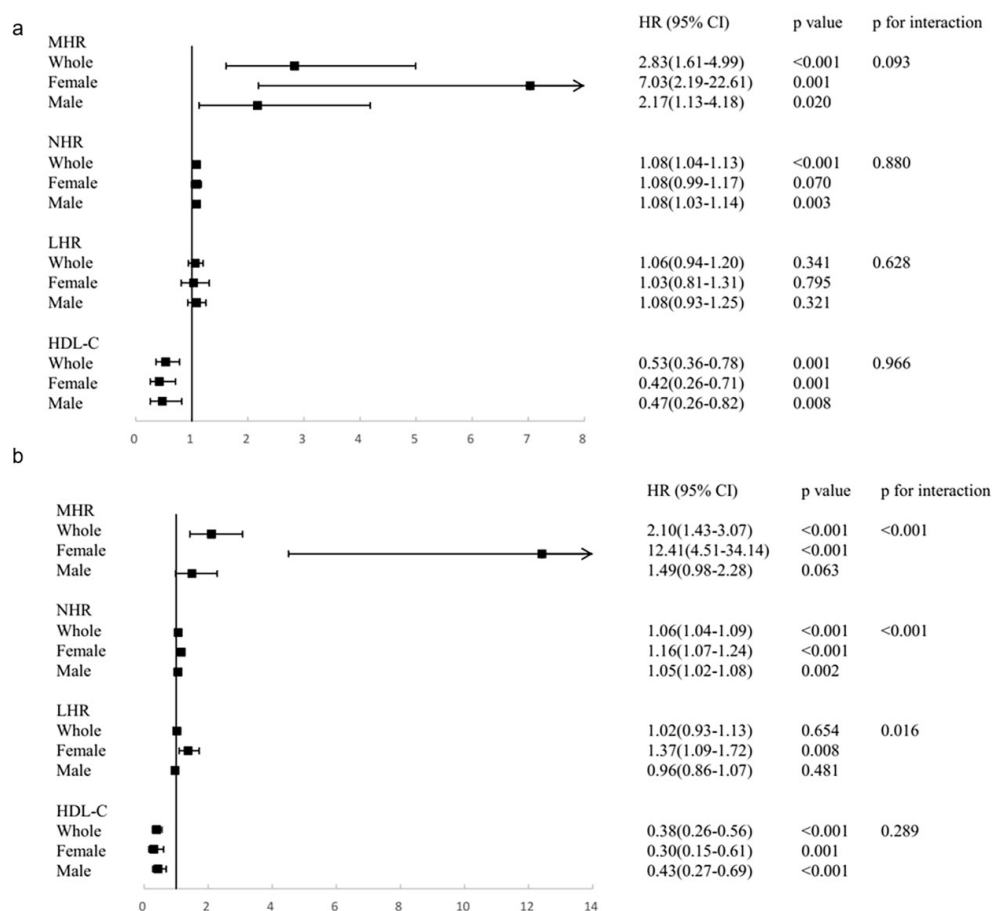


Supplementary Figure 1. Study flowchart.



CAG: coronary angiography, HDL-C: high-density lipoprotein cholesterol, LDL-C: low-density lipoprotein cholesterol, LVEF: left ventricular ejection fraction.

Supplementary Figure 2. Subgroup analysis of the relationship between different parameters and the presence (a) and severity (b) of CAD based on sex.



Adjusted for age, smoking, hypertension, ALT, HbA_{1c}, TG, LDL-C, CK-MB and uric acid.

ALT: alanine transaminase, CAD: coronary artery disease, CK-MB: creatine kinase isoenzymes

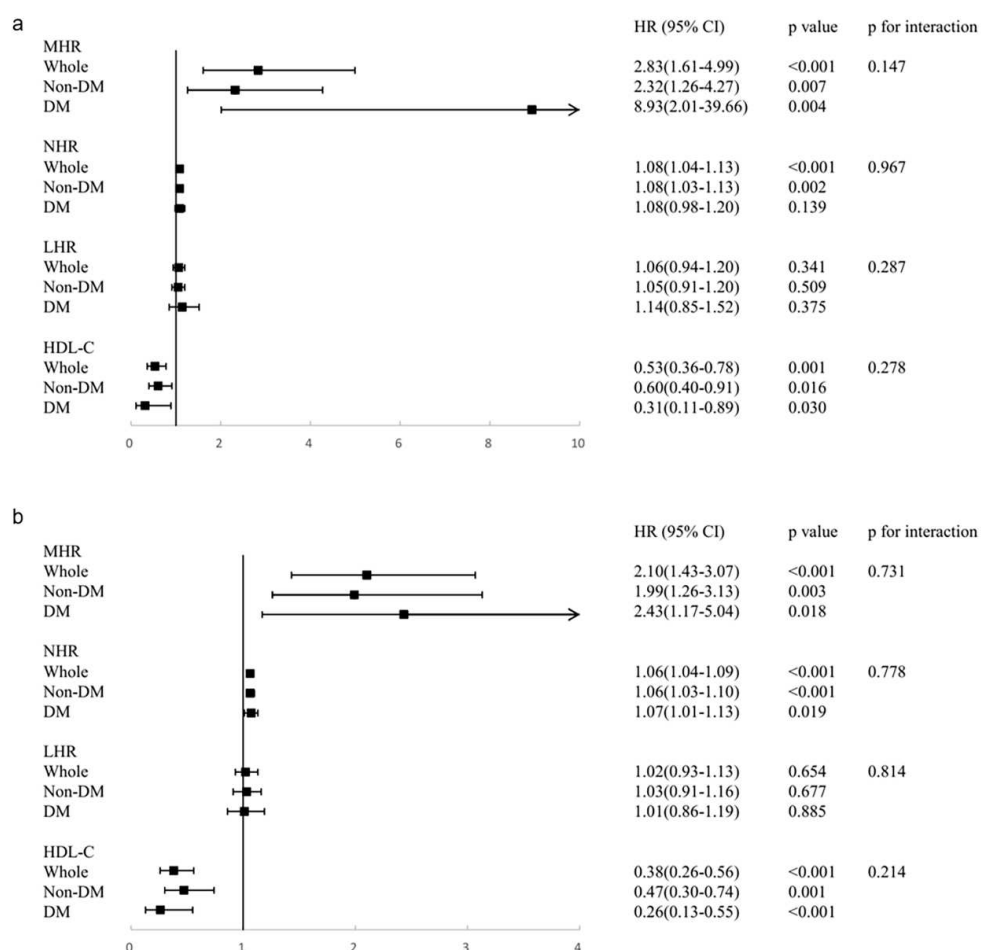
MB, HbA_{1c}: glycated hemoglobin A1c, HDL-C: high-density lipoprotein cholesterol, LDL-C:

low-density lipoprotein cholesterol, LHR: lymphocyte to high-density lipoprotein cholesterol

ratio, MHR: monocyte to high-density lipoprotein cholesterol ratio, NHR: neutrophil to high-

density lipoprotein cholesterol ratio, TG: triglyceride.

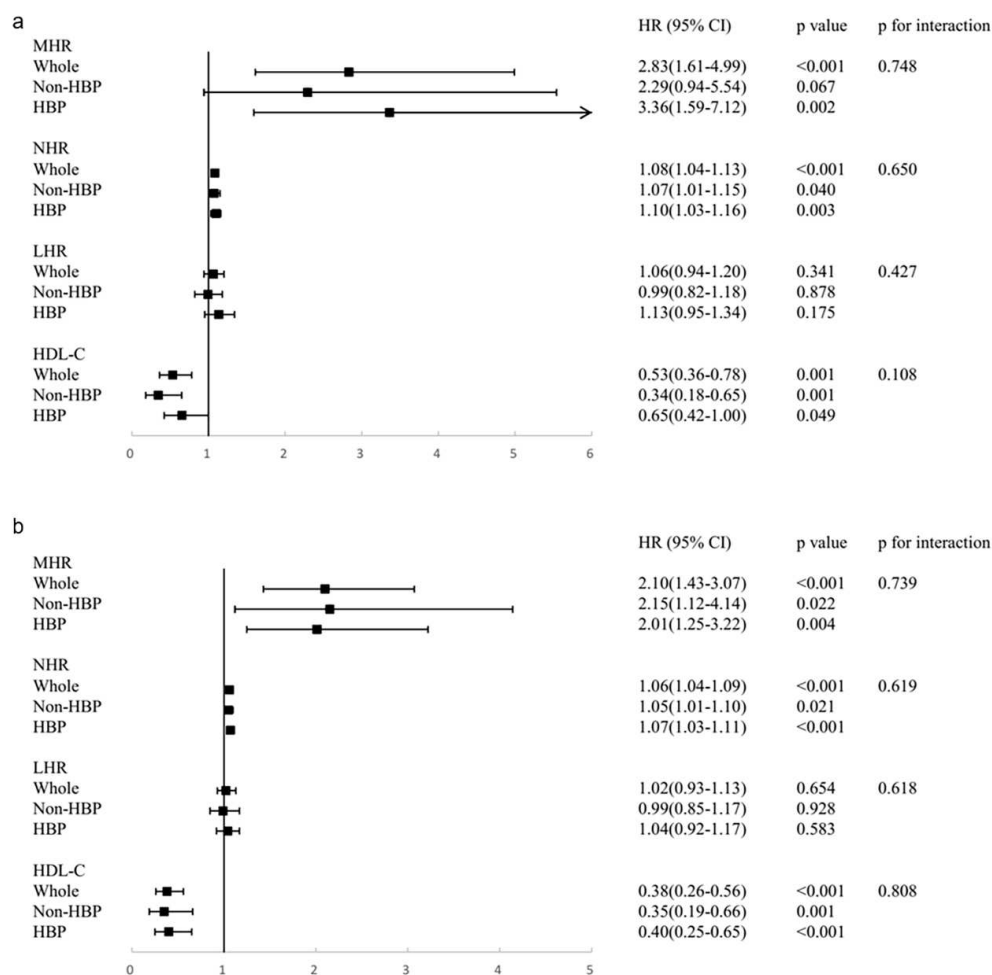
Supplementary Figure 3. Subgroup analysis of the relationship between different parameters and the presence (a) and severity (b) of CAD based on the history of diabetes.



Adjusted for age, sex, smoking, hypertension, ALT, HbA_{1c}, TG, LDL-C, CK-MB and uric acid.

ALT: alanine transaminase, CAD: coronary artery disease, CK-MB: creatine kinase isoenzymes MB, HbA_{1c}: glycated hemoglobin A_{1c}, HDL-C: high-density lipoprotein cholesterol, LDL-C: low-density lipoprotein cholesterol, LHR: lymphocyte to high-density lipoprotein cholesterol ratio, MHR: monocyte to high-density lipoprotein cholesterol ratio, NHR: neutrophil to high-density lipoprotein cholesterol ratio, TG: triglyceride.

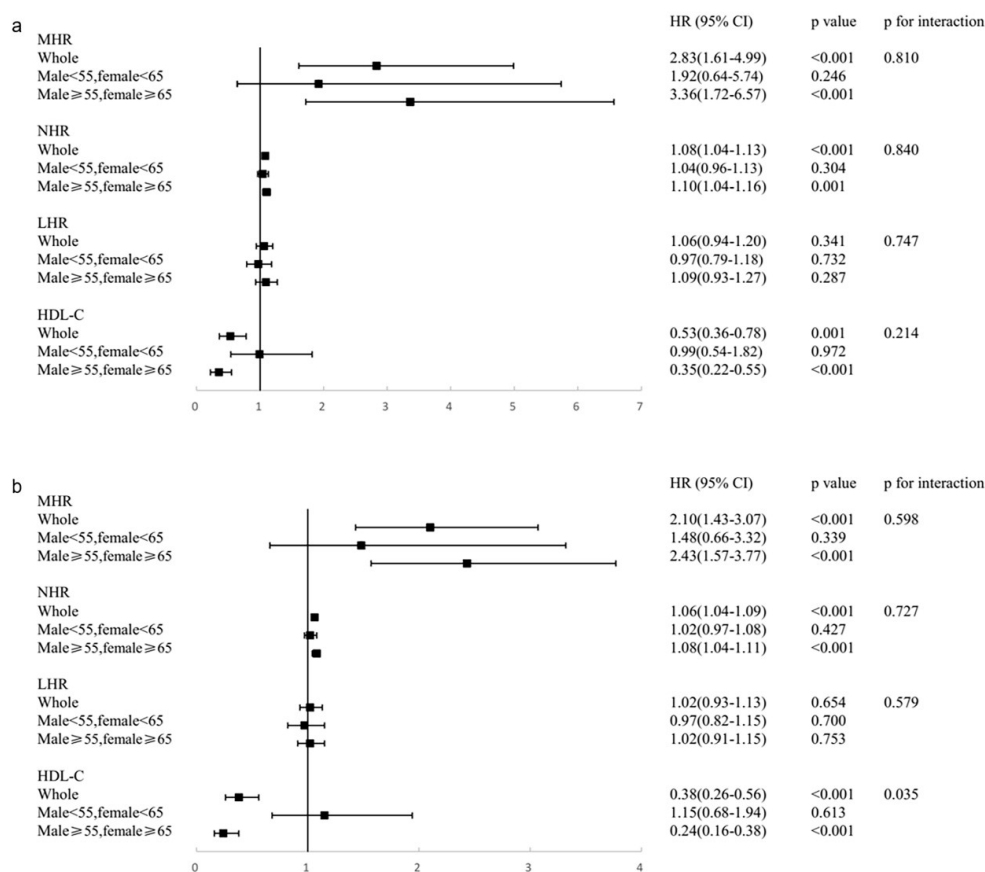
Supplementary Figure 4. Subgroup analysis of the relationship between different parameters and the presence (a) and severity (b) of CAD based on the history of hypertension.



Adjusted for age, sex, smoking, ALT, HbA_{1c}, TG, LDL-C, CK-MB and uric acid.

ALT: alanine transaminase, CAD: coronary artery disease, CK-MB: creatine kinase isoenzymes MB, HbA_{1c}: glycated hemoglobin A_{1c}, HDL-C: high-density lipoprotein cholesterol, LDL-C: low-density lipoprotein cholesterol, LHR: lymphocyte to high-density lipoprotein cholesterol ratio, MHR: monocyte to high-density lipoprotein cholesterol ratio, NHR: neutrophil to high-density lipoprotein cholesterol ratio, TG: triglyceride.

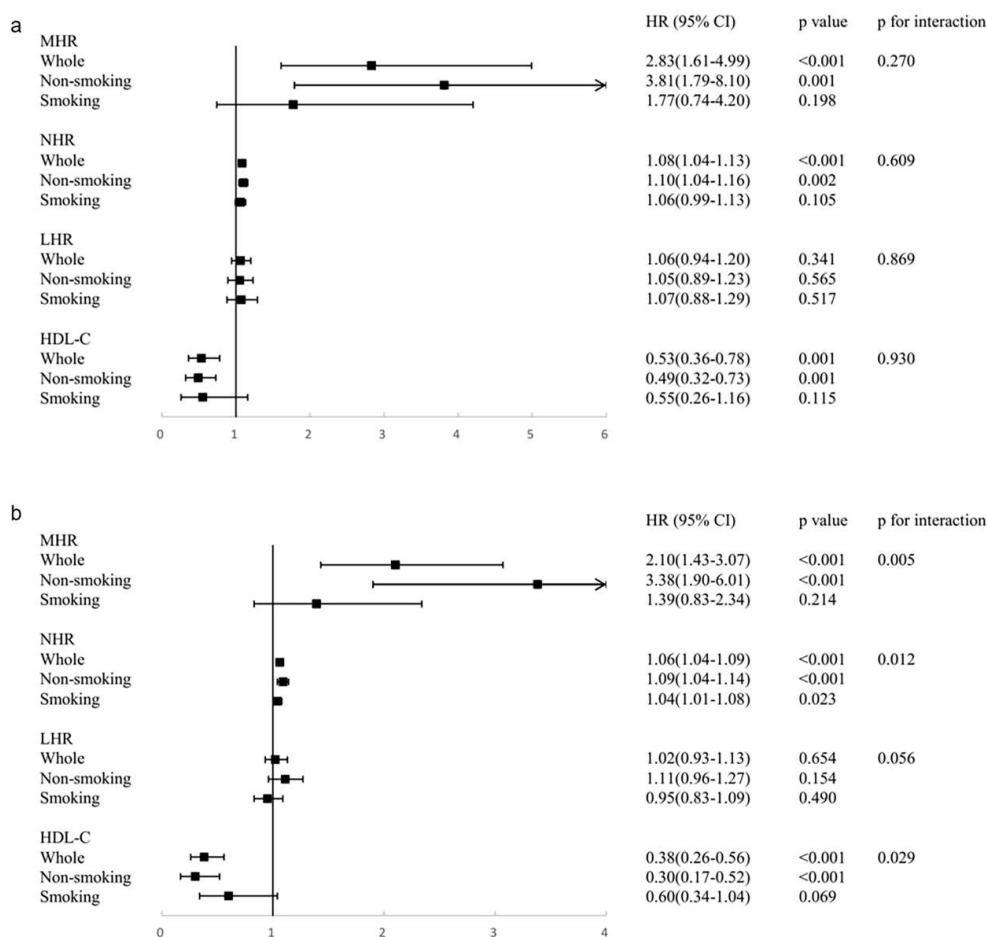
Supplementary Figure 5. Subgroup analysis of the relationship between different parameters and the presence (a) and severity (b) of CAD based on age.



Adjusted for sex, smoking, hypertension, ALT, HbA_{1c}, TG, LDL-C, CK-MB and uric acid.

ALT: alanine transaminase, CAD: coronary artery disease, CK-MB: creatine kinase isoenzymes MB, HbA_{1c}: glycated hemoglobin A1c, HDL-C: high-density lipoprotein cholesterol, LDL-C: low-density lipoprotein cholesterol, LHR: lymphocyte to high-density lipoprotein cholesterol ratio, MHR: monocyte to high-density lipoprotein cholesterol ratio, NHR: neutrophil to high-density lipoprotein cholesterol ratio, TG: triglyceride.

Supplementary Figure 6. Subgroup analysis of the relationship between different parameters and the presence (a) and severity (b) of CAD based on history of smoking.



Adjusted for age, sex, hypertension, ALT, HbA_{1c}, TG, LDL-C, CK-MB and uric acid.

ALT: alanine transaminase, CAD: coronary artery disease, CK-MB: creatine kinase isoenzymes MB, HbA_{1c}: glycated hemoglobin A_{1c}, HDL-C: high-density lipoprotein cholesterol, LDL-C: low-density lipoprotein cholesterol, LHR: lymphocyte to high-density lipoprotein cholesterol ratio, MHR: monocyte to high-density lipoprotein cholesterol ratio, NHR: neutrophil to high-density lipoprotein cholesterol ratio, TG: triglyceride.