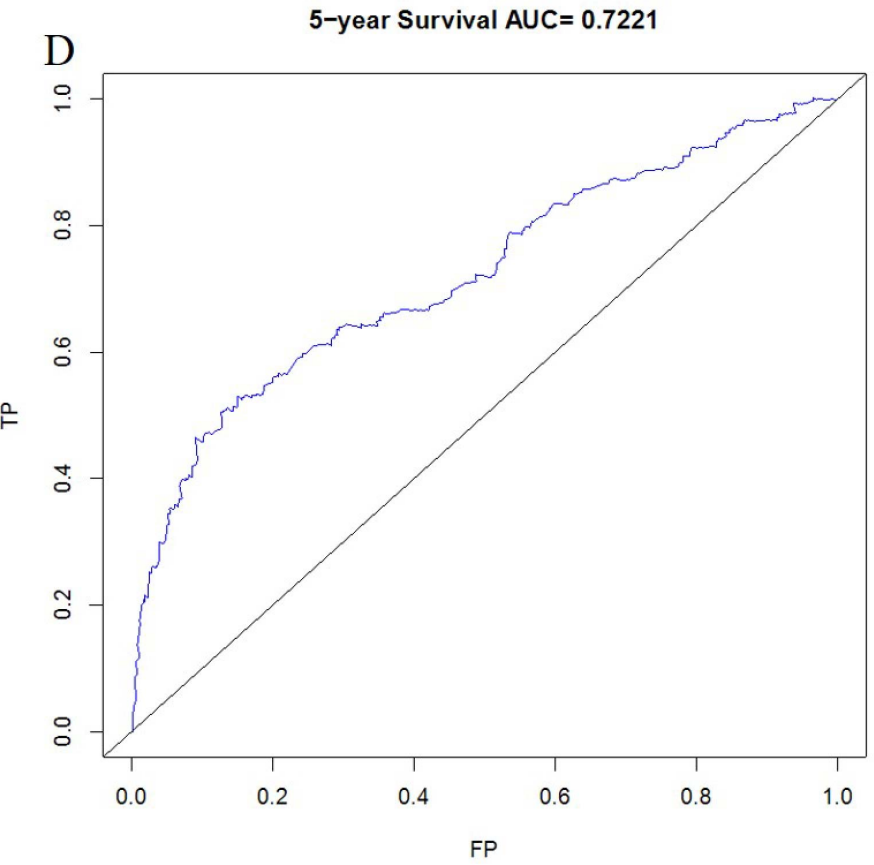
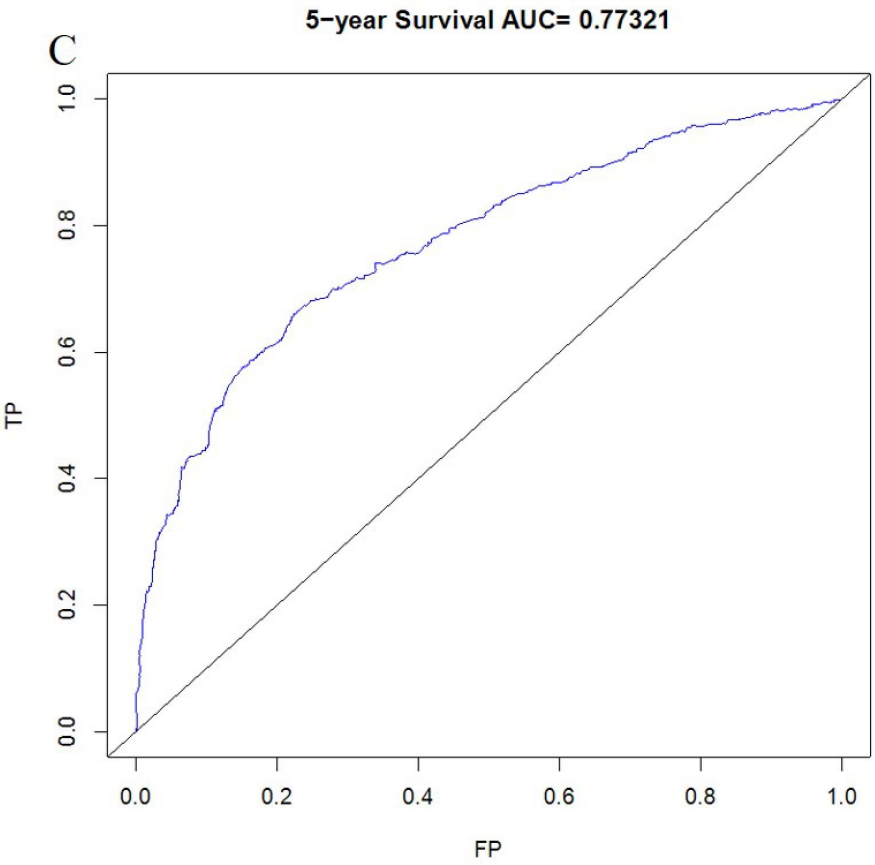
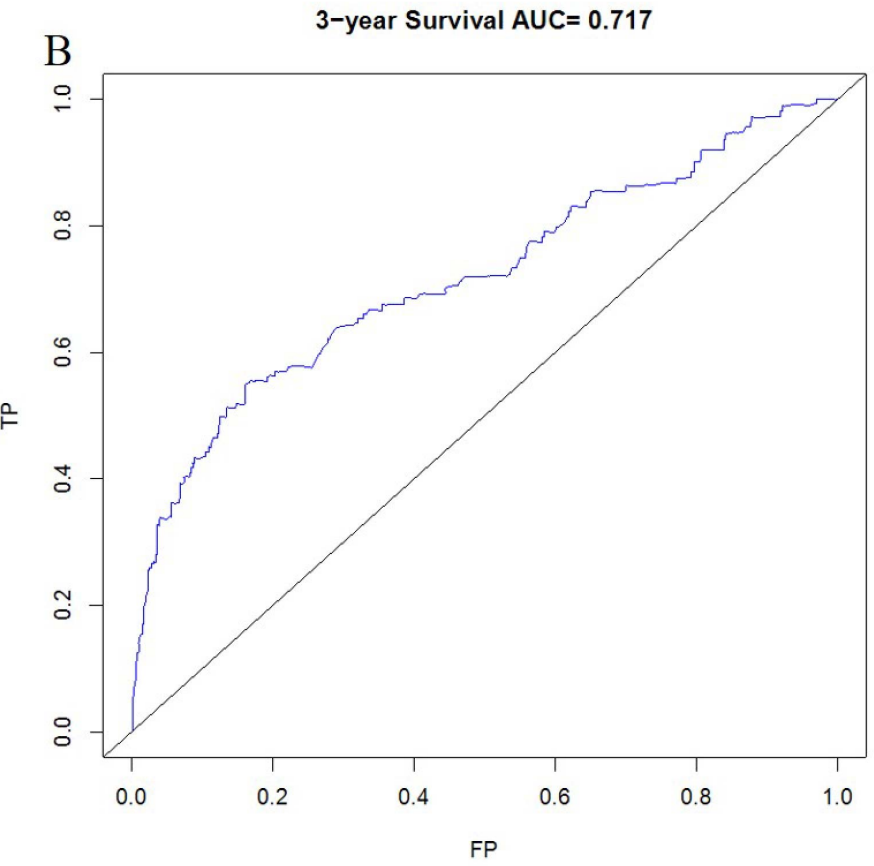
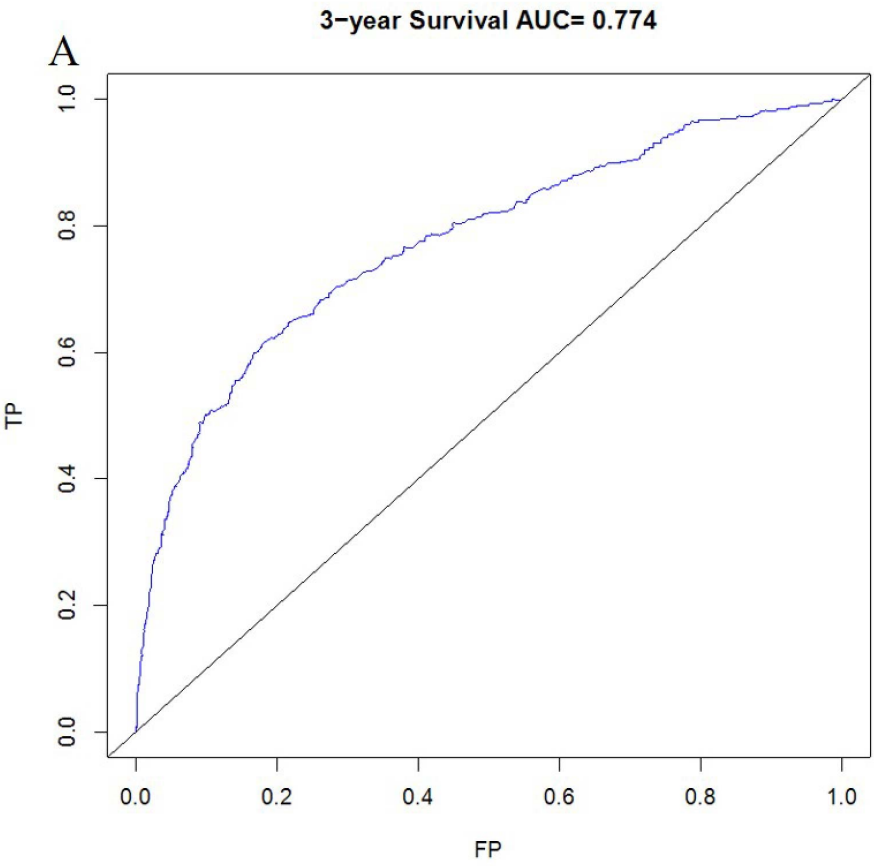
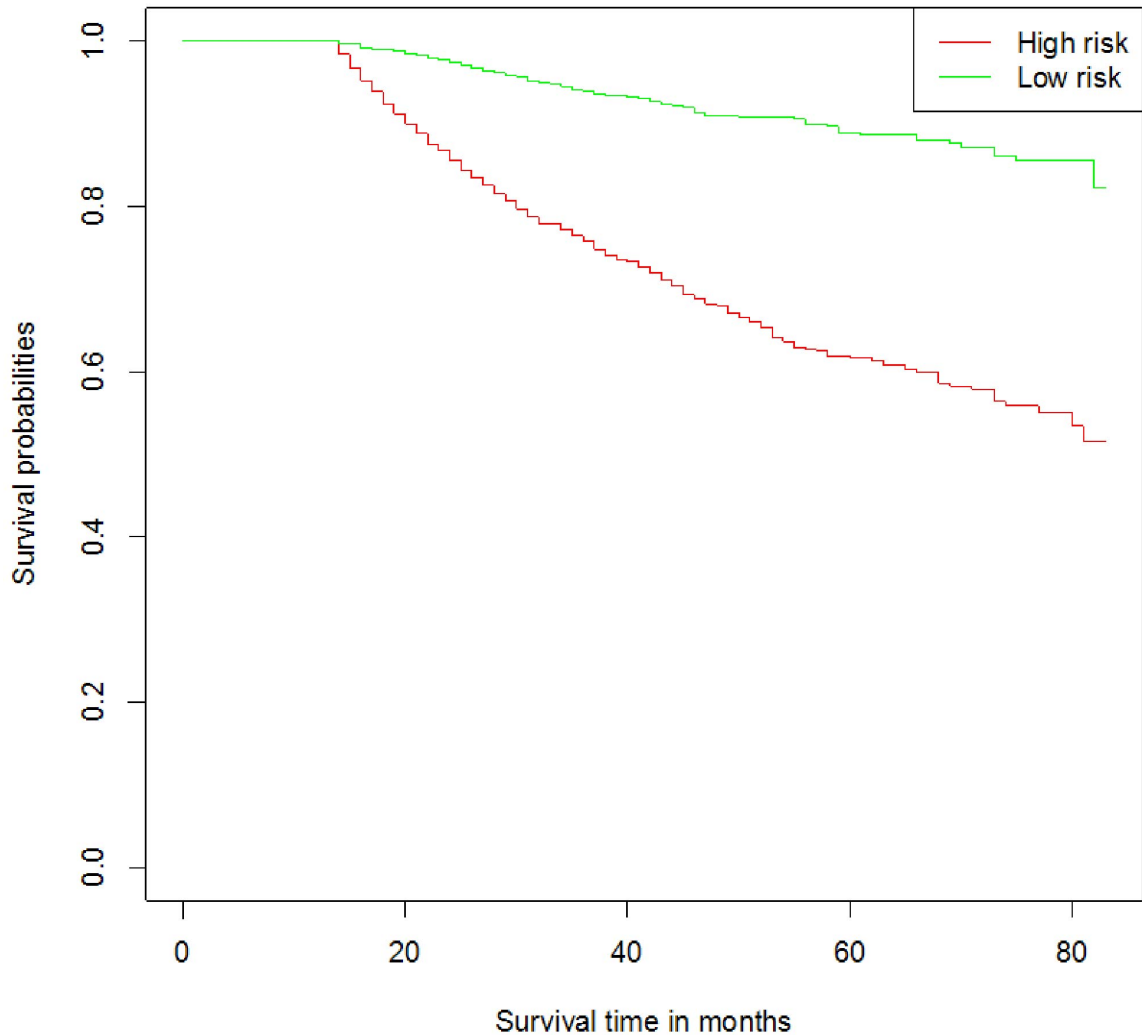


omogram for predicting 3- and 5-year overall survivals of patients with early-stage gastric cancer. Three-year overall survival of (A) training set and (B) testing set; five-year overall survival of (C) training set and (D) testing set.



ar survival of (A) training set and (B) testing set; Receiver operating
aracteristic curves of 5-year survival of (C) training set and (D) testir
t.

Survival curve of risk score(P=0)



oup and high risk group)